

ML Ø66mm Rotating/Flashing/Strobe Beacons

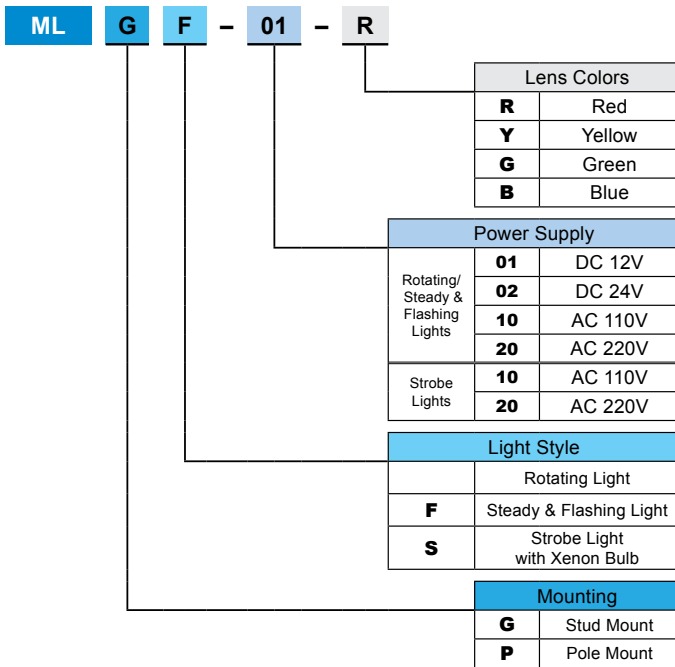


SIGNAL LIGHTS



- Incandescent or Xenon type
- Red, Yellow, Green and Blue lens available
- Smooth or Prism lens
- Stud or Pole mounted
- Wide range of power supply

Order Information

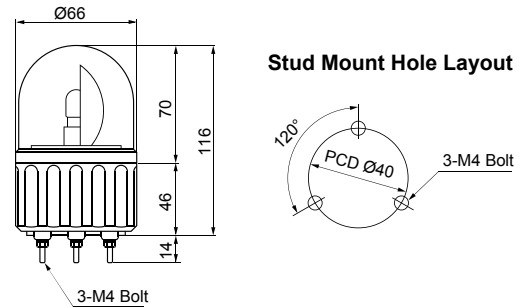


Specifications

Model	MLG/MLP	MLGF/MLPF	MLGS/MLPS
Bulb Type	Incandescent		Xenon
Power Supply	12VDC, 24VDC, 110VAC, 220VAC		110VAC, 220VAC
Current Draw & Wattage	12VDC	0.7A, 8W	—
	24VDC	0.3A, 8W	—
	110VAC	0.07A, 8W	0.22A, 6W
	220VAC	0.03A, 8W	0.11A, 6W
Rotation Rate	130 times/minute	—	
Flashing rate	—		80 times/minute

Dimensions

unit: mm



Optional Orders

Replacement Parts

Bulb	MAB-T15-S-012-08	12V DC, 8 Watt
	MAB-T15-S-024-08	24V DC, 8 Watt
	MAB-T15-S-130-08	110V AC, 8 Watt
	MAB-T15-S-240-08	220V AC, 8 Watt
Xenon Bulb	MAB-STROBE-110-06	110/220V AC, 6 Watt
Lens	LENS-MLG-(□)	Smooth Lens for Rotating Lights
	LENS-MLGF/S-(□)	Prism Lens for Flashing/Strobe Lights

(□): indicates color of Lens; R, Y, G or B

Wall Mount Brackets



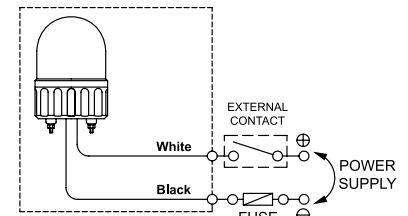
MAP-DS30-BLK (Black)
MAP-DS30-BGE (Beige)

NOTE: See Page 14 for Dimensions.

Wiring Diagram

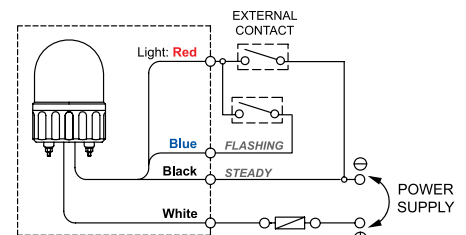
Rotating & Strobe Lights

MLG-□□□□ MLGS-□□□□
MLP-□□□□ MLPS-□□□□



Flashing Lights

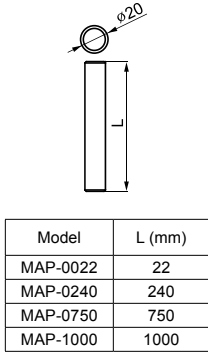
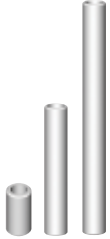
MLGF-□□□□ MLPF-□□□□



Accessories

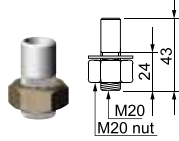
Mounting Poles

MAP-0022
MAP-0240
MAP-0750
MAP-1000

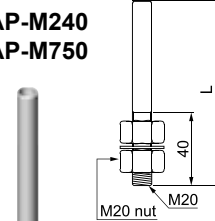


Threaded Poles

MAP-M043



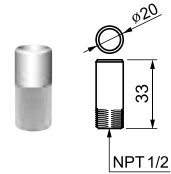
MAP-M240
MAP-M750



Model	L (mm)
MAP-M240	240
MAP-M750	750

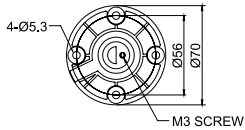
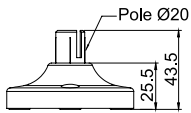
NPT Adaptor

MAP-N033

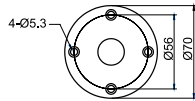
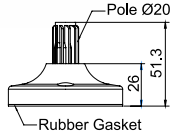


Mounting Bases

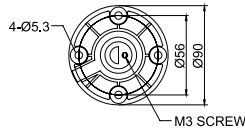
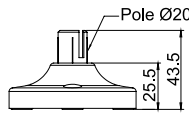
MAM-B070



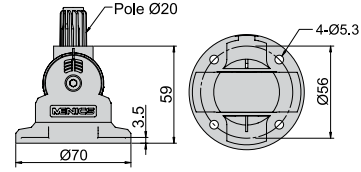
MAM-B070D



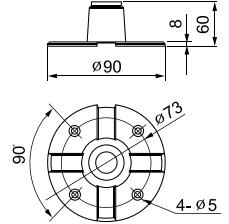
MAM-B090



MAM-B070R

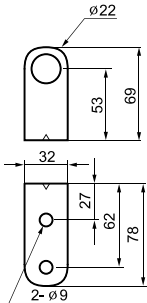


MAM-DS23-20

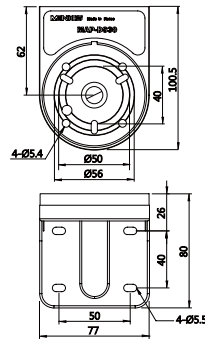


Wall Mount Brackets

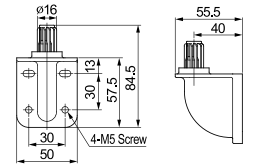
MAM-DS25



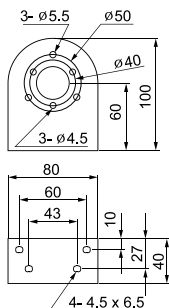
MAP-DS30



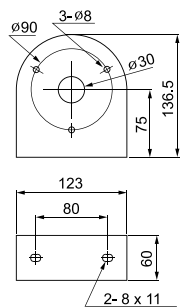
MAP-DS40



MAM-DS26



MAM-DS27



MAM-DS28

